



G3-09 User manual for Mobile Sim Dialer

After installing the sim dialer, power on your mobile, you will see the Ykep™ logo displayed on the stand-by screen.

Please locate the STK menu on your mobile, then find the **IP CALL** menu. The STK menu

Is usually displayed in the applications menu, Sim Services menu, Settings Menu or similar, depending on what model phone.

When you see the menu, this means your mobile supports the 0011 Dialer™ and you can now configure the custom settings. The main menu will display as following.

1. *ON	Use the sim dialer
2. OFF	Stop use the sim dialer
3. NUMBER	Choose the IP access numbers,service1/2/3
4. ADVANCED	The entire configuration should be processed in
5. LANGUAGE	ADVANCED

The entire configuration should be done in the **ADVANCED** menu. Enter the **ADVANCED** menu (the default password is 1234), it will display the following:

1. MODE	Choose call mode: call back/ call direct/call through
2. SET FILTER	Input numbers you want to call through sim dialer or not
3. SPEED	Delay time to sent to the DTMF (destination number)
4. SET NUMBER	Input service number(IP access number)
5. ADD CODE	Add area or country code or # for destination number

1. Dial mode

Choose menu 1 **Mode**, choose the mode you need.

1. MODE	1. 1 CONT. CALL	6. 6 ICC3#
2. SET FILTER	2. 2 ICC1#	7. 7 ICC3
3. SPEED	3. 3 ICC1	8. 8 ICB1
4. SET NUMBER	4. 4 ICC2#	9. 9 ICB2
5. ADD CODE	5. 5 ICC2	10. * ICB3
	6. 6 ICC3#	11. # ICB4

Select **Cont.Call** for call-direct service, select **ICC1#--ICC3** for Call-through, select **ICB1--ICB4** for callback service.

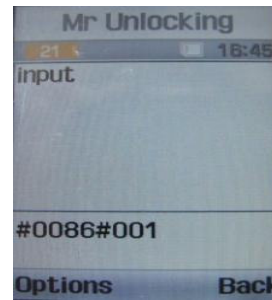
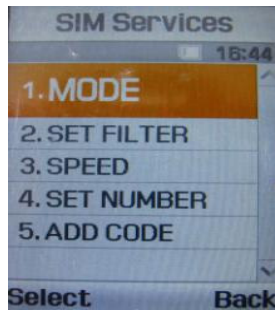
A). The difference between **ICC1#** and **ICC1**: Some IP systems only accept the digits ending with #, and some don't.

B). The difference between **ICC1** and **ICC2**: when you dial the IP access number, there is a voice recording to remind you to press 1,2 or 3 to place a call. Input 1 to check the balance, Input 2 to place a call.

C). The difference between ICB1 and ICB4 is the same as B).

Users have to choose the best suitable option, sometimes it's necessary to test one by one.

2.SET FILTER



1). **Allow:**

Which numbers you want to call through IP system (sim dialer), you can list here.

Input # means all the numbers will through IP system

#0086#0755 means numbers start with 0086 or 0755 will call through IP system, here the # is a separate symbol. you can input Max 40Bit here.

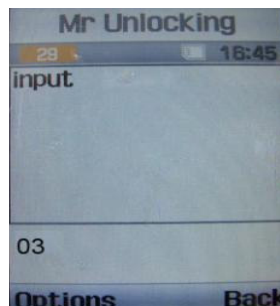
When you only want international or local number call through IP system, list them here.

2). **Limit:** (Same operation with 1).

Usually the emergency numbers are here like 911,110,119....

any numbers you don't want to call through the sim dialer, list here.

3.SPEED

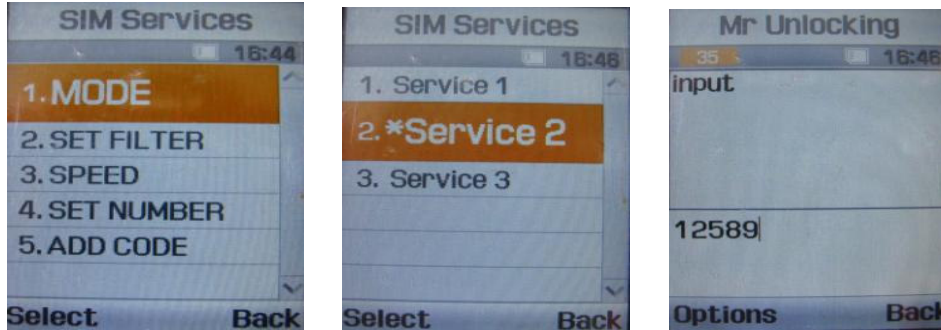


The **SPEED** means the delay time to send the destination number (DTMF) to the IP system.

There is a voice reminder once connected with the IP system, you should wait until the voice reminder over, and then the sim dialer will send the DTMF to the IP system. The time between the connection and voice reminder over is the speed.

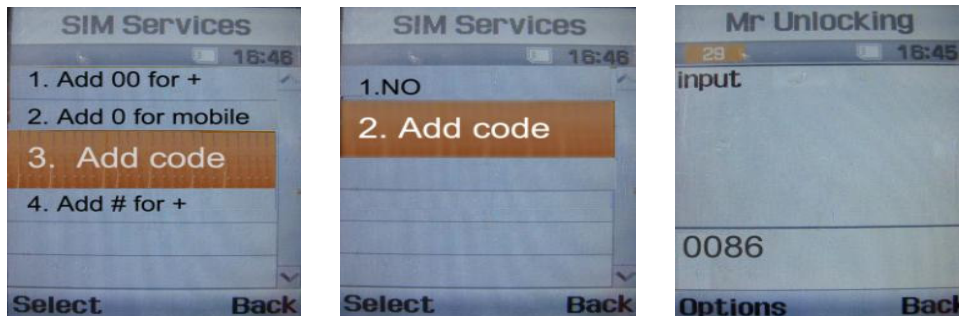
You can input 01 to 09, 1 means 3seconds, 2 means 6seconds, 9means 27seconds.

3.SET IP ACCESS NUMBERS



Here, you can input the IP access number or calling card numbers the default is MAX 3numbers. Ykep™ can customize to 4/ 5/7 or more for you. For calling card, You can also input PIN number here, IP access number*PIN*others Use * to separate them.

5.ADD CODE



- 1) Sometimes we store numbers with prefix +, but most IP systems don't realize +, they usually accept digits, here the selection is **Add 0011 for +**
- 2) Sometimes we store numbers without 0, but some IP systems only accept numbers start with 0. Here the selection is **Add 0 for Mobile.**
- 3) When users call local or international numbers, they can input the area or country code here, to be the prefix of the stored numbers.
- 4) **Add # for +** is for the special request of IP system.

Example:

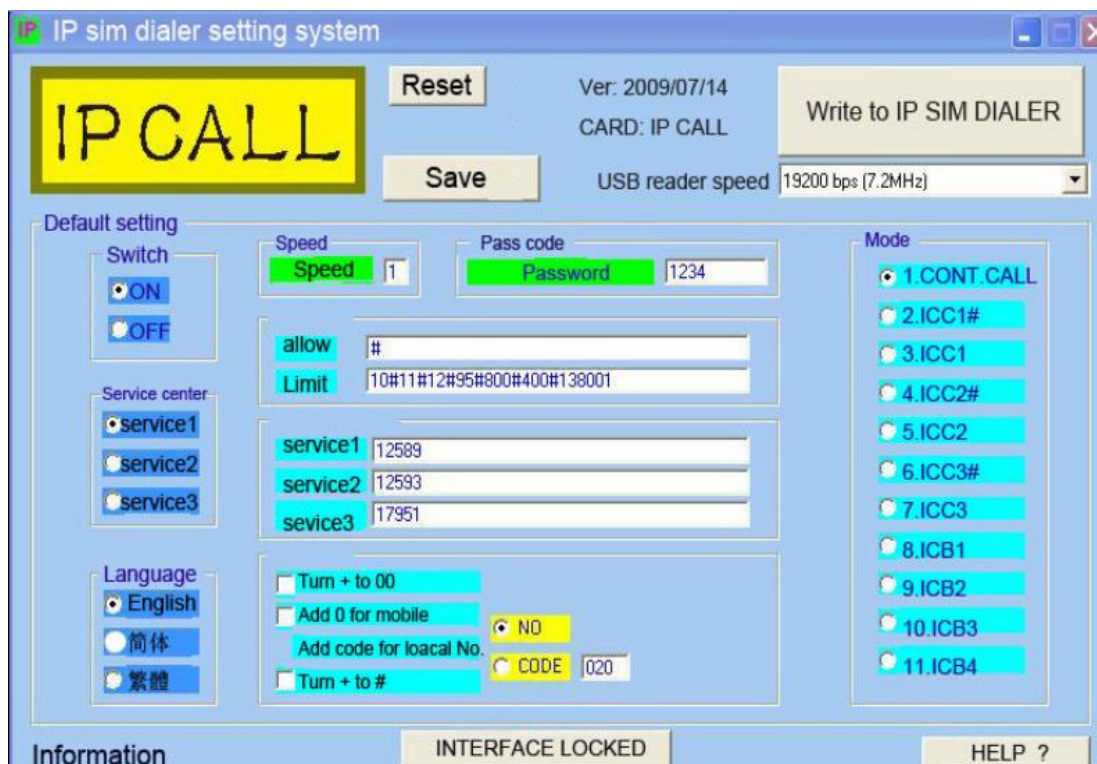
IP access number is 12593, call-through, numbers start with 0086 to call through IP system, 110/119/10086 doesn't through IP system.

1. IP CALL-->ADVANCED-->SET NUMBER-->service1-->12593
2. ADVANCED-->MODE-->ICC2#
3. IP CALL-->NUMBER-->*service1
4. ADVANCED-->SET FILTER-->ALLOW-->#0086
5. ADVANCED-->SET FILTER-->LIMITED-->#11#10086

Configure Sim dialer on PC with USB reader

1. Install the IP CALL software, which is attached in the email you received. It's compatible with Windows XP, Vista may not work.
2. Install the USB reader driver, named USB2.0driver from the CD, which sent together with the car reader.
3. Insert the sim dialer and GSM SIM together into the USB reader, see attached images, for your reference.
4. Insert the USB reader into your PC
5. Double click the IP CALL icon on the windows desktop, a menu will pop up.
6. Input or edit the IP access number, dial mode...etc, then press button [write to IP Call] top right.





verify new data...
verify new data...
Update Completed.

The software won't read the data of sim dialer, every time you insert a new one, it will display the default data. After the data is configured, please check it on your cell phone.

SMS Function:

Yke's 0011 dialer™ sim dialer can be re-configured by SMS, use any normal cell phone to send an SMS to the cell phone with sim dialer, then the sim dialer will be re-configured. Any mobile that can send normal SMS will send the SMS reconfiguration.

Before you send the SMS, please make sure that the cell phone's SMS should be set to 'store in SIM card', not in cell phone.

The format of SMS is **IPset:A01#B1510#12#11#138001C041234D0E2F4G2H0I8**

The SMS must be start with **IP set**, If not with IP set, the SMS will not work.

- A --> allow (multi-Bits)
- B --> Limit (multi-Bits)
- C --> Password (multi-Bits)
- D --> sim dialer ON or OFF. 0 for OFF,1 for ON

E --> Choose service numbers, 1,2,3

F --> Language 1 for English,2 for Chinese-simple,4 for Chinese-traditional

G --> Speed, 0 ~9

H --> turn + to 00, 1 for OFF,0 for ON

I --> dial mode, 1~9/*/#

J --> Set access number service1 (multi-Bits)

K --> Set access number service2 (multi-Bits)

L --> Set access number service3 (multi-Bits)

NOTE:

1. For single figure, like D0, it means sim dialer ON or OFF, 0 for OFF
2. For multi-digits, like B0810#12#11,B present limit,08 present the Bits of the limit-list, it should be double-Bits,01/02../09, not 1/2/3..9.
10#12#11 is the content.
(A,B,C,J,K,L are all multi-digits, there should be input bidigitate figure)
3. The total number of characters for SMS should be no more than 60Bits